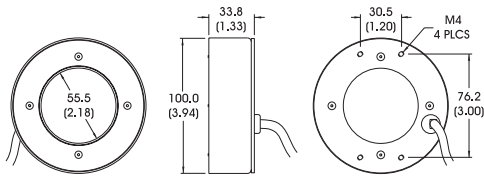




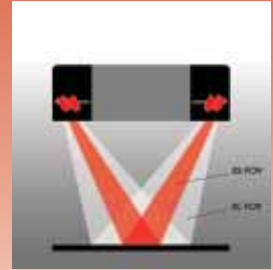
RL4260-RGB
(shown)



DIMENSIONS ARE IN MILLIMETERS (INCHES)

RL4260 Ring Light

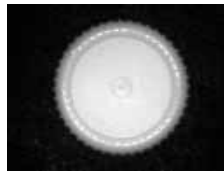
- Ai's workhorse ring light provides significant illumination in a medium sized housing.
- Axial light source designed for non-specular objects
- Available in RGB "all color" version.
- Includes mounting bracket part no. CB092



Light Function Diagram

RL4260-RGB Solution:

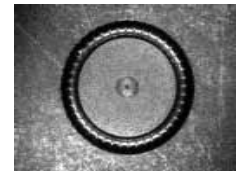
Using the color mixing potential of the RL4260-RGB, this example shows the same red bottle cap as seen by a monochrome camera under three different light colors. The RGB "white" combination shows the red cap as grey against a black background. Seen under red light, the cap appears almost white, and under blue light appears nearly as black as the background.



100% Red Light



100% RGB Light



100% Blue Light

Standard Product Maximum illumination

	Working Distance	Watts/cm ²	Lux
Constant Current	75mm	7.1 mw	4,200
Strobed (100µs)	75mm	142mw	84,000

General Specifications

Light distribution	+/- 10%
Operating temperature	0 to 65°C
Standard product lifetime	100,000 hrs
Product weight	264.9 g 9.3 oz

Standard Variation Current Specifications

	(blue)	(green)	(yellow)	(orange)	(red)	(infra-red)	(white)	(RGB)	
@ 12v	N/A	N/A	240	240	360	420	N/A	N/A	mA
@ 24v	240	240	120	120	180	240	240	250	mA

Part Number Designation

Standard Product **SHIPPED NEXT DAY**

Part Number: **RL4260-660100L** (Configured for use with Ai Power Supply)

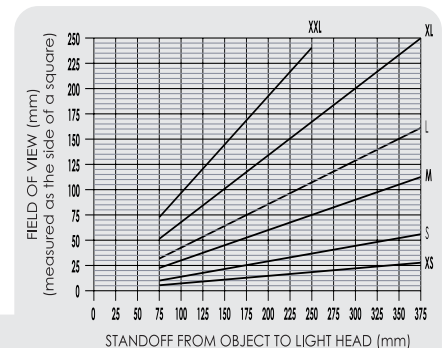
Standard Product Variation **SHIPPED WITHIN TWO WEEKS**

RL4260	X	-	XXX	XXX	XXX	XX	X
			Spectral wavelength	Stand off	Field of view	Optional power Compatibility	Optional Light Conditioning
	B		(blue) 470† (green) 520† (yellow) 590 (orange) 625 (red) 660 (infra-red) 880 (white) WHI† (all color) RGB†	See chart to compute standoff.	XXL XL L M S XS	12 24	D (Diffuser) P (Polarizer)

Version "B" Mounting Option

DIMENSIONS ARE IN MILLIMETERS (INCHES)

† Not available in 12v



* Identify desired FOV and standoff, then specify nearest illuminated area size

Have a question?

Call us @ 802.767.3830 or FAX @ 802.767.3831